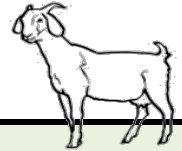




GOAT SUPPLY AT A GLANCE - CANADA

Quarterly - YTD as of June 2014



FEDERAL & PROVINCIAL SLAUGHTER (# of head)

April, YTD	2014	2013	2012	% chg	
				14-13	13-12
West	3 247	3 067	3 437	5.9%	-10.8%
East	13 641	15 694	14 461	-13.1%	8.5%
Canada	16 888	18 761	17 898	-10.0%	4.8%
				% chg	
Annual	2013	2012	2011	13-12	12-11
West	11 824	10 805	9 814	9.4%	10.1%
East	51 741	50 592	50 929	2.3%	-0.7%
Canada	63 565	61 397	60 743	3.5%	1.1%

AVERAGE PRICE - \$/100lbs - live weight

YTD June	2014		2013	
	low	high	low	high
Quebec Auction (St-Hyacinthe)				
Kids - all weights	\$14.83	\$212.00	\$12.50	\$141.67
Does/Nannies - all weights	\$34.50	\$202.67	\$10.00	\$126.67
Bucks/Billies	\$137.67	\$399.17	\$130.00	\$384.17
Ontario 14 Auction Markets	2014		2013	
	low	high	low	high
Kids - all weights	\$56.45	\$298.94	\$45.86	\$257.63
Does/Nannies - all weights	\$53.80	\$253.03	\$46.44	\$243.59
Bucks/Billies	-	-	-	-

Sources: Ontario Cattlemen's Association, Quebec Electronic Auction

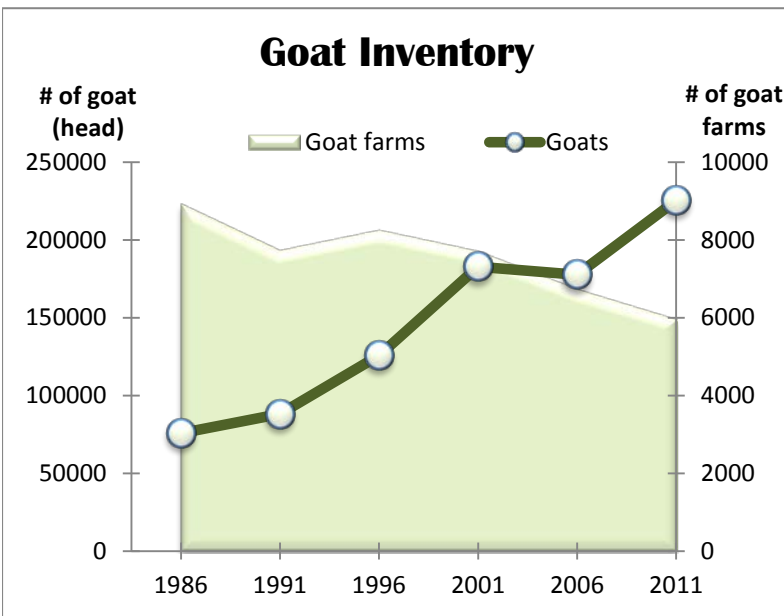
Average warm carcass weights (kg)

(May, YTD weighted average)	2014	2013	2012	% chg	
				14-13	13-12
	14.33	15.08	15.09	-5.0%	-0.1%

Sources: CFIA, Provincial Governments

GOAT INVENTORY

	2011	2006	2001	1996	1991	1986
# of goat farms	5 949	6 725	7 706	8 252	7 735	8 936
# of goats	225 461	177 698	182 851	125 819	88 116	75 788



Source: Statistics Canada - Census of Agriculture

GOAT MILK PRODUCTION (Million Litres)

Province	2013	2012	2011	2010	2009	2008
Ontario*	40.0	36.0	33.0	30.0	26.0	23.0
Québec	11.1	10.3	10.4	11.5	9.5	9.5

* Estimated

Sources: Ontario Ministry of Agriculture, Food and Rural Affairs and Ministère de l'agriculture, des pêcheries et de l'alimentation du Québec

IMPORTS

May, YTD	2014	2013	2012	% chg	
				14-13	13-12
Live goats (# head)	251	228	285	10.1%	-20.0%
Goat meat (kg)	793 494	809 661	915 297	-2.0%	-11.5%

Source: Statistics Canada

Annual *	2013	2012	2011	% chg	
				13-12	12-11
Goat cheese (kg)	127 440	118 426	131 878	7.6%	-10.2%

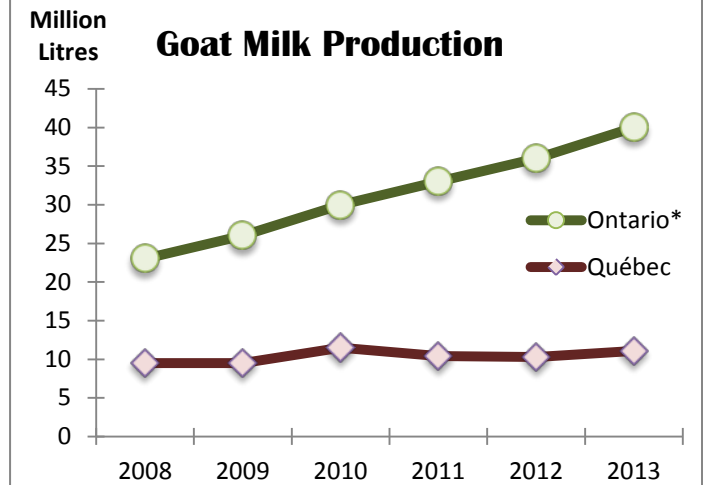
* Data only available on annual basis

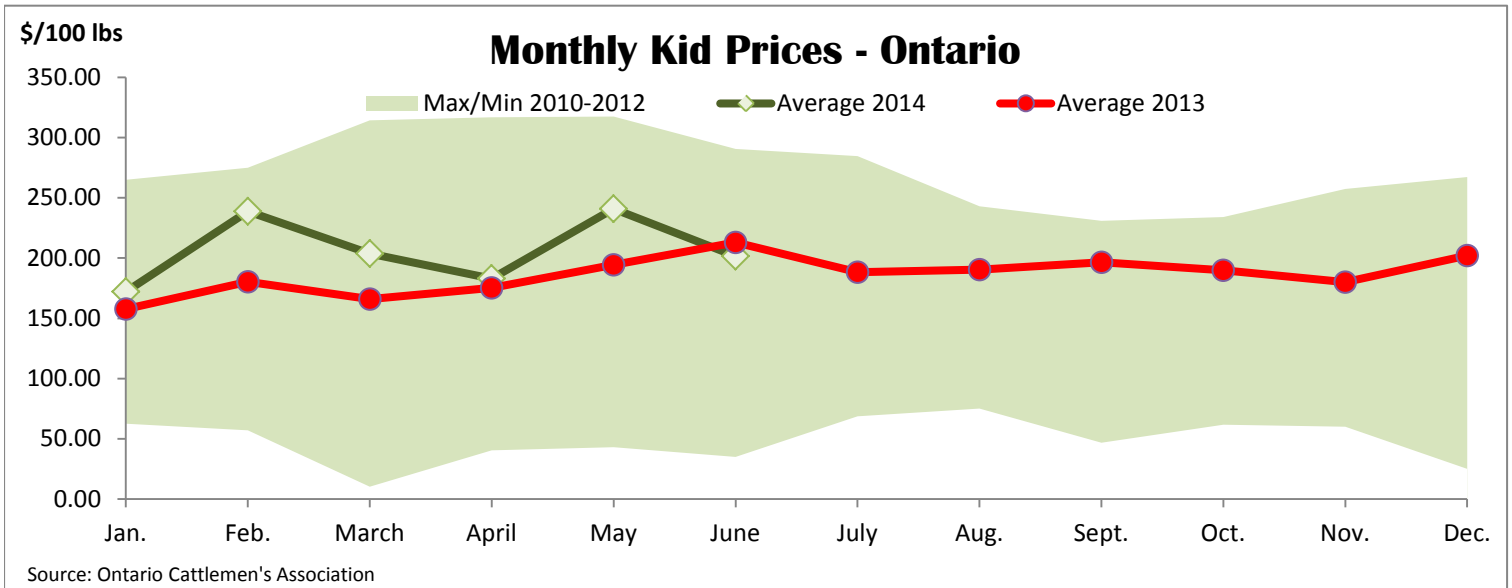
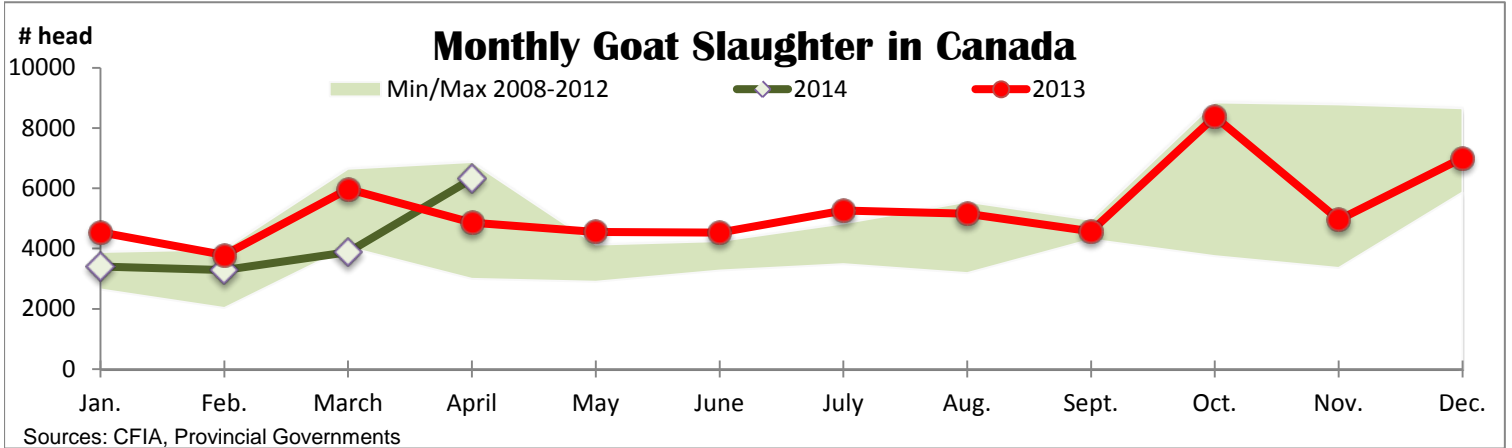
Source: Foreign Affairs and International Trade Canada (DFAIT)

EXPORTS

May, YTD	2014	2013	2012	% chg	
				14-13	13-12
Live goats (# head)	-	360	316	-	13.9%
Goat meat (kg)	524	78 214	1 847	-	-
Goat cheese (kg)	-	6	-	-	-

Source: Statistics Canada





UNITED STATES

GOATS - FEDERALLY INSPECTED

	2014	2013	2012	% chg 14-13	% chg 13-12
June, YTD					
Slaughter (# head)	229 166	248 582	261 678	-7.8%	-5.0%
May, YTD					
Average live weight (lbs)	64.4	64.4	63.0	0.0%	2.2%

Source: USDA

U.S. PRICE SUMMARY (\$US/100lbs)

Producer Livestock Auction Co, San Angelo, Texas

On June 25, 2014

		2014		2013	
		Low	High	Low	High
Kids	25-40 lbs	180.00	196.00	135.00	154.00
	40-80 lbs	188.00	210.00	145.00	174.00
	80-100 lbs	178.00	192.00	138.00	170.00
Does/nannies	all weights	108.00	120.00	75.00	96.00
Bucks/billies	all weights	110.00	150.00	98.00	146.00

Source: USDA

U.S. GOAT MEAT EXPORTS (metric tonnes)

	2014	2013	2012	% chg 14-13	% chg 13-12
May, YTD					
Dominican Republic	46.7	-	-	-	-
Leeward-Windward Islands	17.7	10.1	16.9	75.2%	-40.2%
Hong Kong	13.3	-	-	-	-
Cayman Islands	9.4	3.6	-	-	-
Barbados	3.9	-	-	-	-
Others	4.3	3.9	11.7	10.3%	-66.7%
World Total	95.1	17.7	28.6	-	-38.1%

Source: USDA, FAS

U.S. LIVE GOAT EXPORTS (# of head)

	2014	2013	2012	% chg 14-13	% chg 13-12
May, YTD					
Trinidad & Tobago	337	97	44	-	-
Canada	248	223	283	11.2%	-21.2%
United Arab Emirates	193	-	31	-	-
Leeward-Windward Islar	189	-	-	-	-
Mexico	17	-	-	-	-
Others	-	527	1,675	-	-
World Total	984	847	2,033	16.2%	-58.3%

Source: USDA, FAS